

DOUBLE GREEN STAMPS TOMORROW!

Whether he does the cooking or you do it, the "Quality Is Always Tops" when you shop at Hale's Self Serve and Meat Department.

Meat and grocery items: SHANK PORTION 35c, SHANK HALF or BUTT PORTION 45c, HAM STEAKS 89c, FRANKS 55c, Chuck Steak 49c, SAUSAGE 35c, Swordfish 55c.

Stock Up On These Weekend Grocery Buys... PRINCE FARM LOCAL FRESH GRADE "A" EGGS, CRISCO, One Pie Pumpkin or Squash, None Such Mince Meat, Suncrest Fruit Cocktail, COOKIE DEPT., FROZEN FOOD DEPT., PET-FRITZ PIES.

PLACE YOUR ORDER NOW... The J.W. HALE CORP. MANCHESTER CONN. CORNER MAIN and OAK STREETS

DOUBLE S & H GREEN STAMPS THUSDAY!

Table cloths and sets: PURE LINEN DISH TOWELS, BATES RAYON DAMASK TABLECLOTHS AND NAPKINS, CLEAR PLASTIC TABLECLOTHS, SIMPLEX "CANDLELIGHT" Rayon Damask Sets.

DOUBLE GREEN STAMPS Thurs., Nov. 19, 9 to 9, With All Cash Sales!

IT'S THANKSGIVING... Come in and let Hale's Domestic and Housewares Department show you how to set a lovely holiday table...

IMPORTED ENGLISH TEAPOTS, BASTERS, CARVING AID, SEE OUR HOLIDAY GLASSWARE.

3-PIECE CARVING SET, LOOK LOVELIER by "CANDLELIGHT", TURKEY PLATTER Special \$5.95.

ROASTING PANS, TURKEY PLATTER, ATTRACTIVE BUN or ROLL BASKETS.

OBLONG ALUMINUM ROASTERS, TURKEY PLATTER, ATTRACTIVE BUN or ROLL BASKETS.

TABLE CLOTHS and SETS, YOU'LL NEED EXTRA CHAIRS, RAYON DAMASK SETS.

Extra Special! Scranton Strain-Proofed Avoca Rayon and Dacron LAGE TABLECLOTHS, Ample Free Parking Rear Of Our Store, The J.W. HALE CORP.

Average Daily Net From Run For the Week Ended Nov. 14, 1959 13,041

Union Refuses New Steel Bid

Pittsburgh, Nov. 19 (AP)—The basic steel industry today disclosed it had submitted a new contract proposal to the United Steelworkers union.

Jealous Suitor Kills Bay State Pair, Self

By THE ASSOCIATED PRESS—An attractive divorcee and her husband were shot dead in a Boston street last night and about 12 bystanders were injured.

Ex-Head of GM Shoots, Kills Friend by Accident

Walpole Island, Ont., Nov. 17 (AP)—Pala and shaken from a car accident, Harry Anderson, 67, a retired General Motors president, accidentally shot and killed a friend.

Picket Line Seen For Police Dance

Norwich, Nov. 19 (AP)—The Norwich Police Association (NPA) today announced a picket line in support of a proposed new contract.

Colleges Argue Loans Plus U.S. Loyalty Oath

By THE ASSOCIATED PRESS—Many colleges are protesting a loyalty oath required of needy college students seeking federal loans to help pay for their education.

Volcano Spouts Lava, Chases Crater Crowd

Honolulu, Nov. 19 (AP)—Kilauea volcano became violent today, spouting lava that fell into the air, and drove spectators away.

Ford Ends Production Of Edsels

Detroit, Nov. 19 (AP)—The Edsel today became the first casualty of the new automotive battle of the compact cars.

Second Rocket Fails to Eject Sodium Vapor

Washington, Nov. 19 (AP)—A second sodium vapor rocket was fired today from Wallops Island, Va., but failed to eject its brilliant yellow cloud at the top of flight.

News Tidbits

Columbia Broadcasting System announces it receives permission to renew its Moscow news bureau; Dick Clark, nation's leading television disc jockey, says "American Bandstand" show for first public reply to congressional investigation of his profession.

Estimated, Taint-Free Berries Will Carry Federal Labels

Hartford, Nov. 19 (AP)—A Massachusetts state official assured Connecticut today that testing in the Bay State will be done by the U.S. Food and Drug Administration.

Bay State Maintains Crop Safe

Hartford, Nov. 19 (AP)—A Massachusetts state official assured Connecticut today that testing in the Bay State will be done by the U.S. Food and Drug Administration.

Stans Expects No Balance in Budget for '60

Augusta, Ga., Nov. 18 (AP)—Budget director Maurice H. Stans today said he expects no balance in the federal budget for 1960.

WOMAN HELD IN PLOT

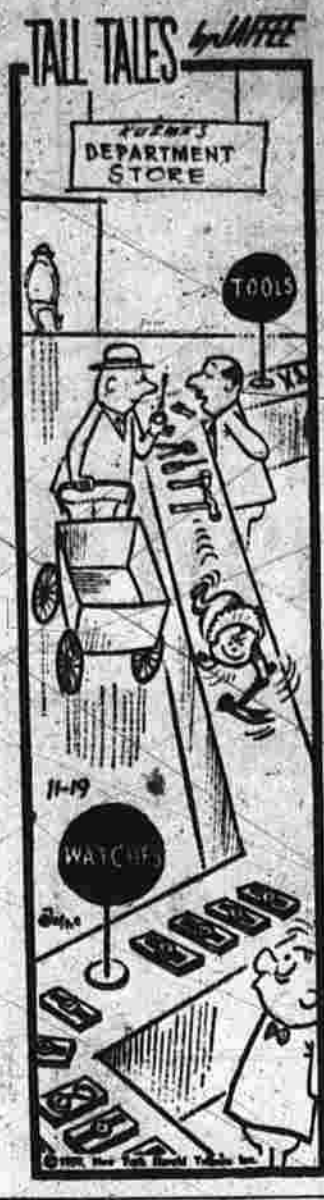
Police today arrested Mrs. Virginia Williams, the only woman ever to hold a cabinet post in the United States, on charges of plotting to assassinate President John F. Kennedy.

Don't Spoil Your Holiday Cut Yule Trees Banned For Places of Assembly

Hartford, Nov. 19 (AP)—The private agency engaged in safety testing its recommendations concerning the use of Christmas trees in places of public assembly.

Rockville Mayor's Role Debated by Party Heads

Republicans and Democrats stepped up their pre-election campaigns today, focusing attention on the role of the mayor in the city government.



Ford Ends Production Of Edsels

Continued production of the Edsel is justified, especially in view of the shortage of steel.

Firefighter Versus Flames

From nearby ladders, adjoining rooftops and the street firefighters battled a 2500-gallon blaze at the

Back Lloyd's Idea at UN

Bonn, London Agree On Disarming Plans

Volcano Spouts Lava, Chases Crater Crowd

Kilauea Iki had grown so violent it "was beyond the reach of preventive measures."

Hospital Notes

Visiting hours: Adults 3 to 8 p.m. Maternity 3 to 8 and 9 to 10 p.m.

Deaths Last Night

By THE ASSOCIATED PRESS. Walpole Island, Ont.—Harry W. Anderson, 67, retired vice president of General Motors Corp., was shot and killed Wednesday by

Stans Expects No Balance in Budget for '60

are those for the foreign aid program, the Department of Health, Education and Welfare, atomic energy, housing, and the National

Welfare Costs Drop Slightly

Welfare costs in Manchester showed a slight drop last month when compared to the same period

Ten Women Join Gibbons Assembly

Ten new members were inducted into Gibbons Assembly, Catholic Ladies of Columbus, at a meeting

Deaths Last Night

By THE ASSOCIATED PRESS. Walpole Island, Ont.—Harry W. Anderson, 67, retired vice president of General Motors Corp., was shot and killed Wednesday by

CHEVROLET BEL AIR 5-DOOR HARDTOP. Equipped with V-8 engine, power windows, radio, heater, defroster, whitewall tires. 100% reconitioned. SALE PRICE \$1600.

1957 CHEVROLET BEL AIR 5-DOOR HARDTOP. Equipped with V-8 engine, power windows, radio, heater, defroster, whitewall tires. 100% reconitioned. SALE PRICE \$1600.

1954 FORD STATION WAGON. Country Squire 9 passenger. Equipped with V-8 engine, Ford-omatic transmission, radio, heater, defroster, whitewall tires. Excellent condition. SALE PRICE \$800.

1954 FORD STATION WAGON. Country Squire 9 passenger. Equipped with V-8 engine, Ford-omatic transmission, radio, heater, defroster, whitewall tires. Excellent condition. SALE PRICE \$800.

BEAUPRE MOTORS. 400 Cornys in Norway. Oslo-Norway has well over 400 organized camping grounds, with accommodations for both tents and trailers.

BEAUPRE MOTORS. 400 Cornys in Norway. Oslo-Norway has well over 400 organized camping grounds, with accommodations for both tents and trailers.

BEAUPRE MOTORS. 400 Cornys in Norway. Oslo-Norway has well over 400 organized camping grounds, with accommodations for both tents and trailers.

BEAUPRE MOTORS. 400 Cornys in Norway. Oslo-Norway has well over 400 organized camping grounds, with accommodations for both tents and trailers.

BEAUPRE MOTORS. 400 Cornys in Norway. Oslo-Norway has well over 400 organized camping grounds, with accommodations for both tents and trailers.

BEAUPRE MOTORS. 400 Cornys in Norway. Oslo-Norway has well over 400 organized camping grounds, with accommodations for both tents and trailers.

From Your Neighbor's Kitchen. A "quick bread" will lend a note of distinction to even the most simple meal.

TV-Radio Tonight. Television. 6:00 Big 2 Theater (in progress)

chez-elle NEW AT. Permanent Wave Special. 7.99. Featuring BLEACHES COLOR TINTS.

Family Supper Set At Center Church. Church Council Sponsors Seminar Lectures Dec. 6.

Radio. DO YOUR LAUNDRY THE QUICK, CONVENIENT WAY. MAYTAG COIN-O-MAT.

Manhattan. 1954 FORD STATION WAGON. Country Squire 9 passenger. Equipped with V-8 engine, Ford-omatic transmission, radio, heater, defroster, whitewall tires. Excellent condition. SALE PRICE \$800.

Manhattan. 1954 FORD STATION WAGON. Country Squire 9 passenger. Equipped with V-8 engine, Ford-omatic transmission, radio, heater, defroster, whitewall tires. Excellent condition. SALE PRICE \$800.

Manhattan. 1954 FORD STATION WAGON. Country Squire 9 passenger. Equipped with V-8 engine, Ford-omatic transmission, radio, heater, defroster, whitewall tires. Excellent condition. SALE PRICE \$800.

Manhattan. 1954 FORD STATION WAGON. Country Squire 9 passenger. Equipped with V-8 engine, Ford-omatic transmission, radio, heater, defroster, whitewall tires. Excellent condition. SALE PRICE \$800.

TURKEY BINGO. SPONSORED BY THE HOLY NAME SOCIETY MEN'S CLUB. CHURCH OF THE ASSUMPTION HALL.

Extra Hours TODAY. 11 HOURS OF UNINTERRUPTED SERVICE. OPEN 9 A.M. to 8 P.M. SAVE...at "Savings Loan"

G. FOX & CO. OPEN 5 MONDAYS. 10 AM TO 9 PM. For your Christmas Shopping convenience. SEE THE AUTHENTIC COLONIAL VILLAGE ON OUR BIG MARQUEE!

Don't Spoil Your Holiday
Cut Yule Trees Banned
For Places of Assembly

Sparks from a fireplace with a substantial screen...
1. Do not buy pyrotechnic devices...
2. Do not use candles on the tree...
3. Do not use electrical lights on the tree...

Local Stocks

Table with 4 columns: Stock Name, Bid, Asked, % Change. Includes stocks like Am. Bank and Trust, Hartford Fire, etc.

Pongratz Chairman
Of Rec-Park Board

Arthur J. Pongratz, 210 Oak St., was elected chairman of the Advisory Park and Recreation Committee last night...

Public Records

United States against Canterbury Metal Works Inc., individual income, estate tax, withholding and federal unemployment tax...

F.I.A.F.
Fairway

Problems to be ironed out at the Vespasian pool...
The commission last month discussed ways of controlling swimming pools...

Let's Talk Turkey
Fresh Native Grayledge Farm
TURKEYS
TOMS 59c
HENS 65c
CAPONS 75c
CAPONETTES 59c
L. T. WOOD
LOOKER PLANT AND MEAT MARKET

CARTER'S
BIG BUYS IN
PLUS 2 SNOW CAPS FREE
WITH EVERY OK USED CAR SOLD
7 TIRES WITH EVERY OK USED CAR
1958 FORD COUNTRY SEDAN WAGON \$1995
1956 CHEVROLET 2-DOOR \$1195
1955 FORD 2-DOOR \$895

O'CONNOR GARAGE
10 YEAR GUARANTEE
ON ALL LABOR AND MATERIALS
BUY NOW - PAY NEXT YEAR
THEN LOW AS \$2.87 A WEEK WITH NO DOWN PAYMENT
DRIVE OUT AND SEE OUTDOOR DISPLAY
145 Enfield St., Thompsonville
OPEN SUN. 1-4 - WED. 9-4
THOMPSONVILLE

1957 PLYMOUTH CLUB SEDAN \$1245
1956 FORD 2-DOOR \$1295
1957 CHEVROLET BEL AIR HARDTOP \$1745
1957 CHEVROLET 2-DOOR SEDAN \$1395
1957 CHEVROLET BEL AIR CONVERTIBLE \$1695
1956 OLDSMOBILE SUPER 88 4-DOOR HARDTOP \$1545
1955 CHEVROLET STATION WAGON \$1145
1955 CHEVROLET BEL AIR HARDTOP \$1095
Carter Chevrolet Co., Inc.
1229 MAIN ST. MANCHESTER
OPEN 9 to 9

Rockville-Vernon
Mental Health
Held Problem
Of Community

It is a community's responsibility to provide special services designed to prevent mental illness...

Anemones Aid Crab

Honolulu - A live, stinging anemone is carried for its own defense in each claw of the boxer crab of Hawaii...

1822 House in Museum

Honolulu - Erected in 1822, the oldest frame house in Hawaii is to be turned into a museum...

Child Guidance Clinic and other clinics in Hartford

The psychological testing service and other means used to identify a child's problems...

London - Tenth Century Knight

London - Tenth Century Knight who went to the Holy Land, fought in the Crusades...

Clotheslines Are For The Birds ... Not Diapers!
Memo to "Mom"... From the Bib and Bottle Set
EVERYTHING COMES OUT BETTER... WHITER... FLUFFIER... WHEN YOU USE THE
General Electric Electric
WASHER DRYER
"THE WORLD'S SHORTEST CLOTHESLINE"
FREE NORMAL WIRING
Reg. \$369.95 Steel Strike or Not - Look At Our Price!
Reg. \$289.95 At Our Priced Installed How Can You Pass This Up!
\$229.95 \$199.95
IMMEDIATE DELIVERY
TAKE AS LONG AS 24 MONTHS TO PAY
NORMAN'S
445 HARTFORD ROAD, Near McKEE
OPEN DAILY 9 to 9 SAT. till 7 P.M.

South Windsor If Quilts Could Talk...

Ladies and even girls living in permanent purchase rather than a rental fee. In the latter years, the quilt lived in barns thanks to the efforts of kindhearted and charitable settlers who felt it should be allowed to spend its declining years in the land it loved even if it became a public charge.

Others, extremely valuable since they represented the only source of cloth which did not have to be imported. Flax Hill on the Foster Farm on Foster St. was so named because the probably, rounded hill was good only for growing flax.

Some of these quilts date back to Revolutionary times. Mrs. John Chapp of Main St. said one of them was made about 1812. Another was made for a bride. Even young love, it seems, wasn't warm enough to offset the icy, frigid blasts of New England winters in those days.

Friendly Circle Fetes Mrs. Hogan

The Friendly Circle held a surprise party for Mrs. Chester E. Hogan, a former president, last night. It followed the meeting held at the home of Mrs. Harold Iversen of 64 Thomas Dr.

Personal Incomes Up During October

Government benefit payments rose by \$500 million, largely because of unemployment benefits paid workers laid off by side effects of the steel strike.

Jealous Suitor Kills Bay State Pair, Self

The Rev. Cornelius Healey of St. James Episcopal Church, Roxbury, who was visiting on Biadent Street, looked out the window when he heard the first of several shots fired below.

C of C to Sound Out Public On Establishing United Fund

The Chamber of Commerce will begin conducting a survey in Manchester this week in December to find out if residents favor establishing a United Fund in the town as a means of coordinating the efforts of charitable and similar organizations into one single fund drive.

Ex-Head of GM Shoots, Kills Friend by Accident

Charles retired as president of GMC Aug. 21, 1958. He is still a GM director. Anderson retired Dec. 31, 1958.



FOR A MOST FESTIVE HOLIDAY, SHOP A&P FOR ALL YOUR ...

THANKSGIVING FOODS

Shop A&P for all the traditional foods for your holiday feast. You'll see an abundance of everything—from turkey to trimmings! Be sure to include quality-famous A&P Exclusives: tasty Jane Parker Baked Goods, Ann Page Fine Foods, and A&P premium-quality Coffee.

AMERICA'S DEPENDABLE FOOD MERCHANT

100th BIRTHDAY Celebration
1959-1959

Special - for the holiday ...

Vigorous and Winy

Bokar Coffee

3 LB BAG **1.75** YOU SAVE 4c

1 lb bag **59c** YOU SAVE 4c

NUTLEY MARGARINE

It's extra vitamin-enriched... Improved flavor formula... in a colorful new package. Thrift priced, too!

6 1 LB PKGS **1.00**

The Turkey with the Following!

A&P TURKEY

Whenever folks talk turkey, A&P's grand birds get plenty of praise. And they deserve it! The special care taken in raising them assures you they'll be temptingly plump and tender. It gives them extra fine flavor. The low price makes them marvelous money-savers, too! They're U. S. Gov't. Inspected Grade A.

READY TO COOK

16 TO 22 LBS **3.43**

6 TO 14 LBS **4.43**

AMERICA'S DEPENDABLE FOOD MERCHANT

100th BIRTHDAY Celebration
1959-1959

Calves Liver **1.09**

Large Bologna **29c**

Swordfish **49c**

Shrimp **69c**

Fish Dinner **57c**

Mix or Match Frozen Food Sale!

A&P FROZEN Fancy Peas 10 OZ PKG

A&P FROZEN Peas AND CARROTS 10 OZ PKG

A&P FROZEN Cut Corn 10 OZ PKG

A&P FROZEN Vegetables 10 OZ PKG

7 for \$1

Jane Parker's Happy Array of Holiday Bakery Buys!

Pumpkin Pie 8-INCH SIZE **49c** 9-INCH SIZE **65c**

Angel Food Ring REG. 49c **39c**

Fruit Cake Crammed with choice nuts and fruit tidbits. Available in cartons for gift mailing.

1 1/4 LB **1.39** 3 LB **2.69** 5 LB LIGHT CAKE **3.99**

CRISCO 1 lb can **81c** 3 LB TIN **3.10**

Winter Hill Cider 23 1/2 GAL **45c**

Jane Parker Stuffing Bread 1 1/2 **29c**

A&P Pumpkin 2 CAN **25c**

Ann Page Cake Mixes 2 1/2 LB 4 OZ **49c**

Mince Meat 1 LB 2 OZ **29c**

Salsina Stuffed Olives 10 OZ **59c**

Bread Crumbs JANE PARKER **19c**

Fully Cooked HAM

Tender, mellow-flavored ham for delicious eating at a thrifty price.

SHANK PORTION **35c**

Shank Half **45c**

Butt Half **55c**

FULLY COOKED HAM **45c**

Center Slices **89c**

Whole Hams **49c**

Cranberry Sauce 2 1 LB CANS **37c**

Super-Right, Heavy Western Corn-fed Steer-Beef!

BOTTOM ROUND or TOP ROUND

Roasts 79c

Frankforts SKINLESS **60c**

Sliced Bacon ALL GOOD FANCY **2 LBS 75c**

Soups CAMPBELL'S MEAT VARIETIES 10 OZ CANS **1.00**

A&P Mincemeat 2 PKGS **39c**

dexo A&P'S OWN SHORTENING 1 LB CAN **26c**

Biscuit Mix 2 1/2 LB PKG **35c**

Tomato PUREE-P. LABEL 2 1 LB 12 OZ CANS **39c**

Mixed Nuts SUPERIOR SALTED VACUUM CAN 14 OZ **69c**

MARGARINE PRICES REDUCED! 1 LB 2 C QUARTERS **26c**

A&P Exclusives ...

Fruits for Salad 1 LB CAN **33c**

Fruit Cocktail 1 LB 14 OZ CAN **39c**

Sweet Potatoes 1 LB 2 OZ CAN **25c**

Fancy Peas 2 1 LB 1 OZ CANS **35c**

Tomato Juice 1 QT 14 OZ CAN **25c**

A&P Corn 8 1 LB 1 OZ CANS **1.00**

Don't miss 38 CHRISTMAS COOKIE RECIPES in the Special Holiday Issue December Woman's Day now on sale --- 10c

Mighty Welcome Savings On Ann Page Fine Foods!

Tomato Soup 10 10 1/2 OZ CANS **98c**

Preserves 2 LB **69c** 1 LB **35c** 1/2 OZ JAR **29c**

Mayonnaise QUART **59c**

EMPEROR GRAPES 2 LBS **29c**

Apples 4 LB **35c**

Pears d'anjou or Bosc 3 LBS **49c**

Walnuts IN SHELL **49c** 2 LB **75c**

A&P Seedless Raisins 2 1/2 OZ **45c**

A&P Pecan Meats 4 OZ PKG **55c**

Mixed Nuts in Shell **49c**

JANE PARKER WHITE BREAD 2 LBS **33c**

SWEEP JUICY AND DELICIOUS

Apples 4 LB **35c**

Pears d'anjou or Bosc 3 LBS **49c**

Walnuts IN SHELL **49c** 2 LB **75c**

A&P Seedless Raisins 2 1/2 OZ **45c**

A&P Pecan Meats 4 OZ PKG **55c**

Mixed Nuts in Shell **49c**

Butter 1 LB PRINT **72c**

Fresh Eggs LARGE SIZE DOZ **49c**

Sage Cheese **69c**

Cheddar Cheese **65c**

Cheese Slices 2 6 OZ PKGS **49c**

Beverages YUKON 2 FULL QT S **25c**

Cigarettes CT. 10 **2.16**

Chocolates 1 LB **79c**

Thin Mints 12 OZ **39c**

CHOCOLATE CANDIES 1 LB **33c**

| | | | | | | | |
|---|---|---|---|---|---|--|---|
| LIBERTY MARASCHINO CHERRIES 4 LB 19c 8 LB 31c | MUSSELMANS FILLING Apple Pie 1 1/2 LB CAN 33c Blueberry Pie 1 1/2 LB CAN 49c | CUT-RITE WAX PAPER 15 FOOT ROLL 25c | SCOTT FAMILY NAPKINS 2 PAGES OF 25c | HEINZ SOUPS CREAM OF TOMATO 3 1/2 LB CAN 35c | SCOTKINS NAPKINS 2 PAGES OF 49c | PLUFFO GOLDEN SHORTENING 3 LB CAN 75c | TETLEY TEA BAGS THE TOPS IN FLAVOR 1 LB 25c 1/2 LB 13c |
| MAZOLA OIL FOR COOKING AND SALADS 1 1/2 GAL 61c | BOSCO CHOCOLATE SYRUP 1 1/2 GAL 59c | SCOTTIES WHITE FACIAL TISSUES 1 1/2 GAL 27c | REYNOLDS ALUMINUM FOIL 16 FT 2 1/2" 73c | SCOT TOWELS WHITE OR COLORED 2 1/2" WIDE 39c 4 1/2" WIDE 31c | LINIT LIQUID BLEACH 1 1/2 GAL 29c | MUSOFT FABRIC SOFTENER BLEND 1 1/2 GAL 48c | KASCO DOG MEAL 1 1/2 GAL 1.39 |

Manchester Evening Herald

Published by THE MANCHESTER EVENING HERALD, INC. 200 North Main Street, Manchester, Conn. Telephone: 241-1111

Subscription Rates: One Year \$12.00, Six Months \$7.00, Three Months \$4.00.

The Real Insult

The fact that some of our most distinguished and capable leaders are being treated as second-class citizens is a real insult.

Conrad And Harold

It will be interesting of course to see what comes out of the meeting between the two men.

Wilmington Del.

A new alkyl-based liquid plastic developed by the Wilmington company permits the tinting of picture and other large windows in the home to cut down glare and the fading effects of sunlight.

Relax Electrically

Let this new Maytag dryer work for you for the next five days... Norman's makes this startling money-saving offer:

WITH THE PURCHASE OF MAYTAG'S "HALO-OF-HEAT" DRYER WE WILL INCLUDE ALL 3

Connecticut Yankee

Senator Kennedy's attitude toward the atomic energy program is a real test of his leadership.

A Thought For Today

It is amazing the number of people who are not reading the Bible, whose lives yet are full of joy.

Plastic Tints Windows

But note how he begins each of his four stanzas. "O Lord that will not let me go."

Wilmington Del.

But note how he begins each of his four stanzas. "O Lord that will not let me go."

But note how he begins each of his four stanzas. "O Lord that will not let me go."

Connecticut Yankee

Senator Kennedy's attitude toward the atomic energy program is a real test of his leadership.

A Thought For Today

It is amazing the number of people who are not reading the Bible, whose lives yet are full of joy.

Plastic Tints Windows

But note how he begins each of his four stanzas. "O Lord that will not let me go."

Wilmington Del.

But note how he begins each of his four stanzas. "O Lord that will not let me go."

But note how he begins each of his four stanzas. "O Lord that will not let me go."

Connecticut Yankee

Senator Kennedy's attitude toward the atomic energy program is a real test of his leadership.

A Thought For Today

It is amazing the number of people who are not reading the Bible, whose lives yet are full of joy.

Plastic Tints Windows

But note how he begins each of his four stanzas. "O Lord that will not let me go."

Wilmington Del.

But note how he begins each of his four stanzas. "O Lord that will not let me go."

But note how he begins each of his four stanzas. "O Lord that will not let me go."

Connecticut Yankee

Senator Kennedy's attitude toward the atomic energy program is a real test of his leadership.

A Thought For Today

It is amazing the number of people who are not reading the Bible, whose lives yet are full of joy.

Plastic Tints Windows

But note how he begins each of his four stanzas. "O Lord that will not let me go."

Wilmington Del.

But note how he begins each of his four stanzas. "O Lord that will not let me go."

But note how he begins each of his four stanzas. "O Lord that will not let me go."

Connecticut Yankee

Senator Kennedy's attitude toward the atomic energy program is a real test of his leadership.

A Thought For Today

It is amazing the number of people who are not reading the Bible, whose lives yet are full of joy.

Plastic Tints Windows

But note how he begins each of his four stanzas. "O Lord that will not let me go."

Wilmington Del.

But note how he begins each of his four stanzas. "O Lord that will not let me go."

But note how he begins each of his four stanzas. "O Lord that will not let me go."

Connecticut Yankee

Senator Kennedy's attitude toward the atomic energy program is a real test of his leadership.

A Thought For Today

It is amazing the number of people who are not reading the Bible, whose lives yet are full of joy.

Plastic Tints Windows

But note how he begins each of his four stanzas. "O Lord that will not let me go."

Wilmington Del.

But note how he begins each of his four stanzas. "O Lord that will not let me go."

But note how he begins each of his four stanzas. "O Lord that will not let me go."

SMITH'S UPHOLSTERY SHOP
460 MAIN STREET
MI 9-4663

VICTOR RIESEL
TOMORROW NIGHT—8:15
HIGH SCHOOL AUDITORIUM
TICKETS \$1.50—AT THE BOX OFFICE

Colonnades Hotel
Palm Beach Shores, Florida

Bolton

Six Boys Join Scout Troop

Boy Scout Troop 73 received six new members...

Lights May Go Out Soon

Little Jackie Foster, 7, sits by a galaxy-decorated Christmas tree...

Keeny PTA Picks Mrs. E. W. Kurtz

OPEN DAILY 8 A.M. to 9 P.M. SUNDAY, 8 A.M. to 9 P.M. PINE PHARMACY

F.I.A.F. Find It At FAIRWAY

GE To Help RETARDED CHILDREN

Lutz Sponsors Space Lecture

Dr. Robert K. Wickware, professor of education at Williams College...

Thanksgiving Dinner From Royal Ice Cream Co.

Warranted Dead: Robert and Olive Hill...

Physician Exams Begin

Manchester Evening Herald Bolton correspondent, Dorcas P. D'IAlia, telephone MI 9-3645.

Manchester Evening Herald Bolton correspondent, Dorcas P. D'IAlia, telephone MI 9-3645.

Manchester Evening Herald Bolton correspondent, Dorcas P. D'IAlia, telephone MI 9-3645.

Manchester Evening Herald Bolton correspondent, Dorcas P. D'IAlia, telephone MI 9-3645.

Lutz Sponsors Space Lecture

Dr. Robert K. Wickware, professor of education at Williams College...

Thanksgiving Dinner From Royal Ice Cream Co.

Warranted Dead: Robert and Olive Hill...

Physician Exams Begin

Manchester Evening Herald Bolton correspondent, Dorcas P. D'IAlia, telephone MI 9-3645.

Manchester Evening Herald Bolton correspondent, Dorcas P. D'IAlia, telephone MI 9-3645.

Manchester Evening Herald Bolton correspondent, Dorcas P. D'IAlia, telephone MI 9-3645.

Manchester Evening Herald Bolton correspondent, Dorcas P. D'IAlia, telephone MI 9-3645.

E.J. Korvette
EJ says: Shopping is an adventure as E. J. Korvette! That's why over 1/4 of a million people shop here every day!

SHOES Everyone Can Afford
BUY 3 or 4 PAIRS AT THIS PRICE IT'S A...

Rockville-Vernon Strong Mayor Form Considered for Town

The Charter and Consolidation Commission last night considered a strong mayor-form of government...

Second Rocket Fails to Eject Sodium Vapor

about 19 miles. It plunged back into the Atlantic 10 miles off Washington Island...

Phone Loan Granted

Montevideo-Uruguay and the United States have signed an agreement under which the U.S. Development Loan Fund will lend up to \$5,000,000 to help finance the expansion of telephone facilities in the Montevideo area...

Picket Line Seen For Police Dance

ton has had trouble in the past. President James Quinn of the NPA explained that the association had hired the Johnny Flynn band because it was interested in obtaining a Norwich shop...

DO YOUR LAUNDRY THE QUICK CONVENIENT WAY MAYTAG COIN-O-MAT 500 CENTER STREET OPEN

MANCHESTER GREEN SHOPPING CENTER. Map showing various stores like BOB HAYES ESSO SERVICE, GEORGE WASHINGTON TALKERS, COMMUNITY BAPTIST CHURCH, etc.

DISCOUNT WORLD MANCHESTER MILLS AT MANCHESTER GREEN. COATS, 2-PIECE KNT DRESSES, FLANNEL GOWNS, etc.

BOYS' BOOTS FOR SPORT AND PLAY. Eight-Inch Moccasin Toe Boot. Repeat Sale THURS., FRI., SAT. ONLY

CHAMBERS FURNITURE SALES. 503 EAST MIDDLE TURNPIKE. ADMIRAL PORTABLE STEREO \$79.95, FIREPLACE ENSEMBLES \$31.95 Up, etc.

1957 OLDSMOBILE 4-DOOR SEDAN. Equipped with power steering, power brakes, hydraulic transmission, radio, heater, defroster, whitewall tires, chrome gray. \$1700

Manchester Green Shoe Outlet. Men's, Women's Leather Bowling Shoes. Women's sizes 6-9 \$3.99, Men's sizes 6-12 \$4.99

KNARF'S MARKET AT THE GREEN. Gemma Oil, Sweet Life Pumpkin Pie Mix, Walnuts, Ripe Olives, etc.

HOUSEWARES. BEACON WAX (Quick Gloss). For linoleum, vinyl, wood, asphalt tile, rubber tile, etc. \$1.99

Expansion Planned By Colonial Board

Plans for a half million dollar expansion program at the Colonial Board Co. on Parker St. were outlined at a public hearing...

Kiwanis Gives Service Pins

Herbert B. House, who served as president of the Manchester Kiwanis Club in 1958, was awarded 35-year gold membership pins at the club's 35th anniversary celebration...

Welles Remain Firm On Polio Shot Stand

The mother of five children who submitted a letter saying she would not be vaccinated against polio...

Sage Allen No-Iron Nylon Jersey by Seas-n-rite 12.98

Cavey's Break Trial Ends When Irwin Pleads Guilty

John A. Irwin, 33 of 110 Ridge Oct. 27, 1958, to one year in jail on account of the May 9, 1958, break at Cavey's. Irwin was charged with breaking and entering...

Share Sales Decline

New York - Electric share sales in the United States totaled \$400,000 in 1958 compared with \$400,000 two years before...

Hare Stamp

Philatelists generally consider the British Guiana one-penny stamp of 1958 the rarest stamp in the world...

Mobilheat 2-PIECE GREEN STAMPS MORIARTY BROTHERS 301-315 Center St. 3-5135

MANCHESTER GREEN SHOPPING CENTER. Map and list of stores including BOB HAYES ESSO SERVICE, GEORGE WASHINGTON TALKERS, COMMUNITY BAPTIST CHURCH, etc.

1956 MERCURY 4-DOOR HARDTOP. Equipped with large heater and defroster, push-button radio with rear speaker, Mercromatic transmission, whitewall tires, two-tone paint and white. A very sharp car. SALE PRICE \$1100

BEAUPRE MOTORS. 4-DOOR SEDAN. Equipped with power steering, power brakes, hydraulic transmission, radio, heater, defroster, whitewall tires, chrome gray. \$1700

BEAUPRE MOTORS. 1957 OLDSMOBILE 4-DOOR SEDAN. Equipped with power steering, power brakes, hydraulic transmission, radio, heater, defroster, whitewall tires, chrome gray. \$1700

Sage Allen No-Iron Nylon Jersey by Seas-n-rite 12.98

The Connecticut Bank AND TRUST COMPANY. No financial problem is too big (or too small!) for our people

The Connecticut Bank AND TRUST COMPANY. 888 MAIN ST. MANCHESTER. 28 Offices - serving 20 Connecticut Counties

COLUMBIA

Bowles to Speak On European Trip

U.S. Congressman Chester A. Bowles, who returned from his European tour last Monday, will speak at an open meeting in the Yarnalls Hall Monday at 8 p.m.

He comes under the sponsorship of the Democratic Town Committee, Mrs. Martha Merrick, chairman, said yesterday. The Yarnalls County Democratic Assn will combine the meeting with its own according to Mrs. Merrick.

Bowles will be making his first appearance as a speaker when he comes here, following his visit to Italy, Turkey, Greece, France, West Berlin, Germany, Turkey and the United Kingdom. He will talk about his trip and what he learned in these countries. This will be by way of a preview for a telecast he will make the next day in Boston.

Bowles will answer questions from the audience, Mrs. Merrick said, following his address. The telecast will be broadcast on WPMR, 10.7, at 8 p.m. on Monday.

Get Citizenship Paper

Mrs. Alma Sorokoff of Hop River Village, who has been here for more than 40 years, received her U.S. citizenship papers last Friday at Hartford, Mrs. Sorokoff, who was born in Poland as a young girl, expressed great pleasure at having finally achieved her goal at that time.

She is the wife of Joseph J. Sorokoff, who is now pastor of St. Columba's Church in Manchester.

MANCHESTER EVENING HERALD, MANCHESTER, CONN., THURSDAY, NOVEMBER 19, 1959

Colleges Argue Loans Plus U.S. Loyalty Oath

Not a few weeks ago, when devotion to the library was served for more than 50 years. It will be done in the library and it bears the inscription on an attached brass plate to her name. Her age and the years she served the institution. In a brief program presented by Mrs. Burton Starkey, Mrs. Clinton Ladd sang the hymn of Thanksgiving, and Miss Helen Field read a Thanksgiving poem.

On the lighter side, a pie making contest between Harold Evans and Marjorie West, brought laughter from those who watched and were glad not to eat the much battered crust.

A Thanksgiving Dinner sponsored by the Lions Club is planned for Saturday night in Yarnalls Hall. Mrs. William L. Williams will play for dancing from 9 p.m. until 1 a.m. Tickets may be purchased from any of the Lions or at the door. Paul Merrick, committee chairman, is being assisted by Joseph Lantry, Kenneth Briscoe, Morris Kaplan, James Charles and George E. Peters.

Gen. Glen Harrod, the former Delta and Gamma, will entertain the COGAS tonight at his new home in Glastonbury.

Formal to be Located

Lyndon B. Little, President of the Section 8 Little League Library Assn, accepted a portrait of Mrs. Little on Friday at the home of Mrs. Raymond E. Lyman, master of Columbia Grande under the name of the new league.

State Rep. William W. Atty, Elizabeth Deha, Hitchcock, chairman of the Republican party, will put in the mail.

NOTICE

Before now files, get your boat or trailer under cover. Rate \$1.00 per foot until May 1.
Call Marvin Thresher
MI 9-3253

NOTICE

Will the person who found the lady's blue wallet last Thursday in the vicinity of Wells St. and Main St. Please call MI 9-6875.

NOTICE

Will the person who found the lady's blue wallet last Thursday in the vicinity of Wells St. and Main St. Please call MI 9-6875.

NOTICE

Will the person who found the lady's blue wallet last Thursday in the vicinity of Wells St. and Main St. Please call MI 9-6875.

The Baby Has Been Named...

James Russell, son of Mr. and Mrs. Thomas Russell Graham, 14 Redding St., He was born Nov. 7 at Manchester Memorial Hospital. Her maternal grandmother is Charles Kibbons, 34 Redding St. He has a brother, Thomas Charles, 23 months.

Katherine Julia, daughter of Mr. and Mrs. Joseph Curtis, 65 Brooklyn St., Rockville. She was born Nov. 6 at Rockville City Hospital. Her maternal grandmother is Mrs. Katherine Huntley, New York City. Her paternal grandmother is Mrs. Julia Curtis, 35 River St., Rockville. She has a sister, Linda Lorraine, 1.

Ray Anna, daughter of Mr. and Mrs. Charles Brennan, Buff Co., Poland. She was born Nov. 6 at Rockville City Hospital. Her maternal grandfather is Joseph Almenta, Hartford. Her paternal grandparents are Mr. and Mrs. James Brennan, 220 E. Main St., Rockville. She has a brother, Steven Thomas, 2.

Jonathan Fitzgerald, son of Mr. and Mrs. John Phelps, Townsend Rd., Andover. He was born Nov. 9 at Hartford Hospital. His maternal grandparents are Mr. and Mrs. Walter W. Taylor, Williamstown. His paternal grandfather is Lewis W. Phelps, Andover. He has two brothers, David, 2½, and Roger, 13, and two sisters, Charlotte, 10, and Sandra, 18.

Joy Lynne, daughter of Mr. and Mrs. Raymond F. Starkweather Jr., 23 Benton Rd., Stamford. She was born Nov. 11 at Stamford Hospital. Her maternal grandparents are Mr. and Mrs. Lincoln Murphy, 62 Russell St., Stamford. Her paternal grandparents are Mr. and Mrs. Raymond Starkweather, 193 Woodlodge St., Her maternal great-grandparents are Mr. and Mrs. David Muldoon, 80 Russell St.

Carl Anthony, son of Mr. and Mrs. David Kulo, 33 Benton St., He was born Nov. 10 at Manchester Memorial Hospital. His maternal grandmother is Mrs. Sophie Kulo, Rockville.

Nancy Elizabeth, daughter of Mr. and Mrs. Melvin T. Bidwell, 48 N. School St., She was born Nov. 11 at Manchester Memorial Hospital. Her maternal grandparents are Mr. and Mrs. Harold A. Topf, 54 Union Pl., Her paternal grandparents are Mr. and Mrs. George M. Bidwell, 80 N. School St., She has two brothers, Teddy, 8½, and David, 2½, and a sister, Susan, 2.

Steven James, son of Mr. and Mrs. William G. Lakso, 6 Village St., Rockville. He was born Nov. 10 at Manchester Memorial Hospital. His maternal grandfather is Mrs. Allen Cowder, 6 Village St., Rockville. His paternal grandparents are Mr. and Mrs. William O. Lakso, Ellington.

Amanda Lynn, daughter of Mr. and Mrs. Ashton Hyde Ruston, 18 Farmington, Conn. She was born Nov. 11 at Manchester Memorial Hospital. Her maternal grandparents are Mr. and Mrs. Frank Lanter, Arbor Acres Farm, Glastonbury. Her paternal grandparents are Mr. and Mrs. Conrad R. Kolbe, Rye Neck, N.Y. Her paternal great-grandparents are Mr. and Mrs. William C. Ruston, Williamsburg, Mass. She has a sister, Lisa Rae, 3.

Betty Jean, daughter of Mr. and Mrs. Sidney Pixley, Arbor Acres Farm, Glastonbury. She was born Nov. 10 at Manchester Memorial Hospital. Her maternal grandparents are Mr. and Mrs. Frank Lanter, Arbor Acres Farm, Glastonbury. Her paternal grandparents are Mr. and Mrs. Conrad R. Kolbe, Rye Neck, N.Y. She has a brother, Sidney Arthur Jr., 13 months.

Cynthia Jean, daughter of Mr. and Mrs. Robert D. Parsons, 81 Homestead St., She was born Nov. 7 at St. Francis Hospital, Hartford. Her maternal grandfather is Mr. and Mrs. Michael Carson, East Taunton, Mass. Her paternal grandparents are Mr. and Mrs. Earl M. Parsons, Easton.

Samuel George, son of Mr. and Mrs. Wilbur R. Stone Jr., 177 Irving St., He was born Nov. 7 at St. Francis Hospital, Hartford. His maternal grandparents are Capt. and Mrs. E. E. Johnson, Canal Zone. His paternal grandparents are Mr. and Mrs. Wilbur R. Stone Sr., Cheshire.

Kathleen, daughter of Mr. and Mrs. Charles J. Dowling Jr., 109 Main St., She was born Nov. 9 at St. Francis Hospital, Hartford. Her maternal grandmother is Mrs. Elizabeth Carson, East Taunton, Mass. Her paternal grandparents are Mr. and Mrs. Charles J. Dowling, Jamestown, N.Y.

Clare Irene, daughter of Mr. and Mrs. Jules D. Duchon, 26 Bright St., Thompsonville, Conn. She was born Nov. 11 at Manchester Memorial Hospital. Her maternal grandfather is Mrs. Elizabeth Carson, East Taunton, Mass. Her paternal grandparents are Mr. and Mrs. Louis Ducloux, Berlin, N.H. She has three brothers, Paul, 10, Dennis, 7, and Robert, 5; and a sister, Carole Ann, 2½.

Kathleen Kim, daughter of Mr. and Mrs. Alfred DeChandia, 19 Laurel Pl., She was born Nov. 11 at Manchester Memorial Hospital. Her maternal grandparents are Mr. and Mrs. Frank DeChandia, 202 Foster St., She has two brothers, Richard, 6, and Frank, 17 months.

Jeffrey Allen, son of Mr. and Mrs. George R. Hansen Sr., 85 Cedar St., He was born Nov. 12 at Manchester Memorial Hospital. His maternal grandmother is Mrs. Otto Kurupf, 67 Union St. His paternal grandfather is Mrs. Peter F. Hansen, 85 Cedar St. He has a brother, George S. Jr., 2.

Mary Ellen, daughter of Mr. and Mrs. John Piango, 67 Benton St., She was born Nov. 12 at Manchester Memorial Hospital. Her maternal grandmother is Mrs. Julia Cook, 67 Benton St. Her paternal grandparents are Mr. and Mrs. Frank Piango, East Hartford. She has three brothers, Ronald, 10, Dennis, 6, and Thomas, 6.

John Alton, son of Mr. and Mrs. Alton Haddock, 83 Fairfield St., He was born Nov. 13 at Manchester Memorial Hospital. His paternal grandparents are Mr. and Mrs. Thomas Haddock, 87 Fairfield St. He has two brothers, David, 16, and Thomas, 8; and a sister, Edna, 19.

Lucille Mary, daughter of Mr. and Mrs. Vincent J. Vignone, 98 Christine Dr., East Hartford. She was born Nov. 12 at Manchester Memorial Hospital. Her maternal grandparents are Mr. and Mrs. Joseph Vignone, 98 Christine Dr. She has two sisters, Sonya, 8½, and Donna Ann, 21 months.

Scott Anthony, son of Mr. and Mrs. Roger Gessay, 23½ Elm St., Rockville. He was born Nov. 13 at Manchester Memorial Hospital. His maternal grandmother is Joseph Gessay, 16 Elizabeth St., Rockville.

David Michael, son of Mr. and Mrs. Norman Ledger, 101 Foster St., He was born Nov. 12 at Manchester Memorial Hospital. His maternal grandparents are Mr. and Mrs. Henry A. Gaultreau, Middlebury, Vt. His paternal grandparents are Mr. and Mrs. Emily Legee, Sanford, Maine. He has a brother, Robert Joseph, 1; and three sisters, Maureen Ann, 6, Sharon Ann, 3, and Laurie Marie, 2.

Ralph Robert, son of Mr. and Mrs. Albert Schneider, Tolland Stage Rd., Rockville. He was born Nov. 13 at Manchester Memorial Hospital. His maternal grandparents are Mr. and Mrs. Ernest Laughlin, 37 Windsor Ave., Rockville. His paternal grandmother is Mrs. Pauline Schneider, Butcher Rd., Ellington. He has two brothers, David, 9, and James, 2.

Christina Lynn, daughter of Mr. and Mrs. Charles E. Gaskell, Montauk Dr., Vernon. She was born Nov. 13 at Manchester Memorial Hospital. Her maternal grandparents are Mrs. Helen Folnick, Storrs, and John Folnick, Hartford. Her paternal grandmother is Mrs. Ella Gaskell, 42 Terra Rd. She has a sister, Victoria Ellen, 9.

David Scott, son of Mr. and Mrs. H. W. Woodcock, 80 Hayes Rd., Wapping. He was born Nov. 14 at Manchester Memorial Hospital. His maternal grandparents are Mr. and Mrs. A. A. Patte, West Hartford. He has three brothers, Alan, 11, Larry, 8, and Robert, 5.

Johnny Howard, son of Mr. and Mrs. John E. Holgeron, West Willington. He was born Nov. 14 at Manchester Memorial Hospital. His maternal grandparents are Mr. and Mrs. John Wymann, Florida, Ill. His paternal grandparents are Mr. and Mrs. Howard Holgeron, West Willington.

Clayton Lee, daughter of Mr. and Mrs. Bruce W. Davis, 61 Foxcroft Dr., She was born Nov. 13 at Manchester Memorial Hospital. Her maternal grandparents are Mr. and Mrs. Bernard J. Pucvah, 11 Lenox St., Her paternal grandparents are Mr. and Mrs. William T. Davis, 61 Foxcroft Dr.

Timothy John, son of Mr. and Mrs. John A. Wadbol, 14 S. Hawthorne St., He was born Nov. 13 at Manchester Memorial Hospital. He has a brother, Steven, 11, and two sisters, Lovelia, 18, and Linda, 7.

GIVE BLOOD

BE THANKFUL YOU CAN GIVE

MEMO TO MANCHESTER RESIDENTS: You and you... didn't get that pint of blood you need in that operation or accident for nothing... it came from the Red Cross bloodmobile visit. Sure, the blood came from the Hartford Regional Blood Center but it was put there by the event and sacrifice of people, some from our own town. When you or your family or that friend of yours got that blood transfusion, someone in Connecticut replaced that pint of blood from his own body, so you could have it.

There has been some mistake in the minds of people in Manchester, as with other people in this State, that the blood comes from the Hartford Center and they can get all they want.

Every pint you use has to be replaced through the efforts of Red Cross blood donors.

Why all the fuss?

Because the bloodmobile workers in Manchester can't remember when Manchester last made its quota of 100 pints.

The bloodmobile will visit the Elks Club on Monday from 12:45 to 5:30 p.m.

Let's give back some of the blood we've used.

For Unsurpassed Quality For Abundant Variety... For Substantial Savings...

First National's the Place for Thanksgiving Shopping!

The Perfect Beef for a Tender Pot or Oven Roast-Cut from Heavy Western Steer Best Your Best Meat Buy of the Week - Tops in Good Eating at a Most Economical Price

BONE-IN CHUCK ROAST 53¢

BONELESS - Lean and Tender CHUCK ROAST 69¢

BONE-IN - Tender and Flavorful CHUCK STEAK 63¢

SHOULDER - Well Trimmed Smoked Butts 59¢

Mildly Cured Sliced Bacon 39¢

Link Sausage 49¢

COUNTRY STYLE 2 Lb. PKG 98¢

Fresh Sliced Cod 39¢

ORDER YOUR THANKSGIVING TURKEY NOW!

So Much Depends On The Turkey - Make Sure It's First National Quality!

Substantial Savings on Thanksgiving Needs!

FINAST - Fancy Sweet Potatoes 2 18 OZ CANS 45¢

FINAST - Fancy Small Size Sweet Peas 2 7 OZ CANS 35¢

WHOLE ONIONS 2 1½ LB JARS 49¢

JUMBLE-PAC - Small or Large Stuffed Olives 10 OZ JAR 49¢

SMALL - Cleaned Fancy Shrimp 5 OZ CAN 43¢

FINAST - Fancy Meat Mince Meat 2 9 OZ PKGS 39¢

FINAST - For Light Flaky Crust Pie Crust 2 9 OZ PKGS 25¢

Reynold's Foil REG ROLL 28¢

Top Quality Fresh Produce!

FLORIDA - LARGE SIZE

Oranges 18 FOR 59¢

Grapefruit 4 FOR 33¢

Pears 2 LBS 29¢

Grapes 2 LBS 29¢

Apples 4 LB 43¢

Lettuce HEAD 19¢

Celery BUNCH 29¢

Broccoli BUNCH 33¢

Onions 3 LBS 33¢

Turnips YELLOW BUTABAGA 15¢

Squash SWEET - HAWYLAND 3 LBS 25¢

Potatoes BUTTERNUT 13¢

Figs PULLED CALIFORNIA 1½ LB PKG 53¢

Dates 6 OZ REG 29¢

Walnuts DIAMOND 4 OZ 49¢

Mixed Nuts FANCY 1½ LB PKG 39¢

Chestnuts IMPORTED 18 29¢

More Thanksgiving Values!

Instant Potatoes BORDEN'S 5½ OZ 33¢

Nut Shelf Mixed Nuts 14 OZ CAN 89¢

BC Breakfast Cocktail 4 OZ CAN 39¢

Mince Meat GRANDMOTHER'S 28 OZ JAR 49¢

Royal Puddings ALL FLAVORS 4 REG 35¢

Shredded Coconut DUNKER'S 7 OZ CULO 31¢

Nabisco Cookies ORO CREAM 1½ LB SANDWICH CULO 47¢

Dole's Fruit Cocktail 17 OZ CAN 29¢

Educator Cookies HOLIDAY ASSORTMENT 1½ LB PKG 45¢

Stuffing Mix STICKNEY & POOR 4 OZ CAN 17¢

Star-Kist Tuna WHITE MEAT 4½ OZ CAN 35¢

Codfish Cakes STARBUCK'S 10½ OZ CAN 21¢

Finast Cocktail Sauce 12 OZ BTL 29¢

CHOICEST MEATS IN TOWN...!

YES, HIGHLAND PARK HAS THEM AGAIN! **Fancy VALCHRIS Turkeys..**

These broadbreasted government Grade "A" birds from California. PLACE YOUR ORDER NOW to be assured of the exact weight you want.

We shall also feature: **PLUMP NATIVE TURKEYS**

PORK SALE

Tender Young Porkers **45¢** LB.

WHOLE LOIN or RH HALF

HOOD'S GALLON HOMOGENIZED MILK 89¢

It's Here Again! HOOD'S EGG NOG 75¢ QUART

U. S. NO. 1 WINTER KEEPING POTATOES 28 Lbs. 89¢

EXTRA LARGE FLORIDA ORANGES 69¢ Doz.

HIGHLAND PARK MARKET

317 HIGHLAND ST., MANCHESTER MI 3-4278

It's Time To Order Your FARM FRESH Range Hill Farm Turkey!

We are proud and pleased with the fine quality of our BROAD-BREADED TURKEYS. We know that you will be delighted to serve one of our RANGE HILL FARM TURKEYS to your holiday guest. Agricultural research has developed this year an even finer, more tender broadbreasted bird! Here at Range Hill we lead the field in modern turkey processing. YOU HAVEN'T SEEN or TASTED A FINER TURKEY; SEE and TASTE THE DIFFERENCE!

HENS 12 to 16 Lbs. 59¢

TOMS 17 to 20 Lbs. 53¢

21 Lbs. and Up 49¢

ORDER NOW! TR 5-5675

Are You Giving TURKEYS for the HOLIDAYS?

Here's a gift the whole family will enjoy. SPECIAL PRICE ON QUANTITY ORDERS!

"YOUR GUESTS DESERVE THE BEST..."

RANGE HILL FARM TURKEY FARM

REGAN ROAD, YERNON, CONN. PHONE TRUMONT 5-5675

FOOD KING AT KING'S

Former Cheney Mills Hartford Road and Pine St. Manchester, Conn.

Plenty of FREE PARKING Parcel Pickup Service To Your Car

Food King U. S. Top Choice Quality Beef Dept.

TURKEYS 43¢ LB.

(18 to 20 Lb. Avg.)

COLONIAL MASTER SMOKED HAMS 45¢ Whole or Butt Half

LEAN FRESHLY GROUND BEEF 2 Lbs. 89¢

H. L. HANDY'S FLAVOR FOURSOME (BRIGHTWOOD BRAND)

LEAN SILENT SAUSAGE 59¢ 1-LB. PKG.

PURE PORK SAUSAGE MEAT 35¢ 1-LB. PKG.

BRIGHTWOOD BACON 59¢ 1-LB. PKG.

SAUSAGE LINKS 59¢ 1-LB. PKG.

FANCY GOVT. INSPECTED YOUNG HEN TURKEYS 39¢ LB. (OVEN READY) 9 to 14 Lb. AVG.

HEAVY WESTERN BEEF CHUCK ROASTS 39¢ LB.

FRESHLY GROUND ALL BEEF HAMBURG 33¢ LB.

GOLDEN CROWN SLICED BACON 35¢ 1-Lb. Cello Pkg.

FRANKFURTS 2 Lb. Bag 89¢

FRESH MEAT CHICKEN 39¢ Legs or Breasts.

DAIRY SPECIALS

GRADE "A" EGGS 49¢ doz. LARGE 41¢ doz. MEDIUM

COOPER'S SHARP CHEDDAR CHEESE 79¢ LB. (No Waste)

DOMIN'S HORSERADISH 2 1/2 OZ. 55¢

IMPORTED DANISH BLEU CHEESE 83¢ LB. "A REAL PARTNER FOR CELERY"

FRESH BAKED DAILY FLAVOR QUEEN WHITE SLICED BREAD 12¢ REG. SIZE LOAF

FOR YOUR HOLIDAY TABLE

Fruits and Vegetables

U. S. NO. 1 FANCY CALIF. RED EMPEROR GRAPES 2 Lbs. 29¢

SWEET JUICY FLORIDA TANGERINES 49¢ Doz. Jumbo Size 120

LARGE DOUBLE BUNCH FANCY CALIFORNIA PASCAL CELERY 29¢

NEW CROP LARGE RED DIAMOND WALNUTS 49¢ LB. FULL 16 OZ. BAG

NEW CROP EXTRA FANCY BROADWAY MIXED NUTS 55¢ LB. FULL 16 OZ. BAG

Low Prices on Popular Brands!

SALADA TEA 4 OZ PKG 43¢ 8 OZ PKG 83¢

PKG OF 25¢ 48 BAGS 65¢ PKG OF 100 BAGS 1.19

Praise TOILET SOAP 2 REG BARS 27¢

Praise TOILET SOAP 2 BATH BARS 41¢

Swift's MEATS FOR BABIES 2 3/4 OZ JARS 49¢

Trend DETERGENT 2 LGE PKGS 39¢

Trend LIQUID DETERGENT 2 12 OZ CANS 59¢

Cleanser BON AMI 14 OZ CAN 15¢

Jet Spray BON AMI AEROSOL CAN 59¢

Purex BEADS BLEACH 18 OZ PKG 39¢

Blu White 6 OZ PKG 25¢

Joy SUDS MAKER 12 OZ CAN 41¢

Spic & Span HOUSEHOLD CLEANER 1½ LB PKG 29¢

Duz BLUE DOT 1 LGE PKG 34¢

Comet CLEANSER 2 14 OZ CANS 29¢

Ivory LIQUID DETERGENT 12 OZ CAN 41¢

Calo Cat Food 2 15½ OZ CANS 29¢

Calo Dog Food 2 15½ OZ CANS 29¢

Scotties FACIAL TISSUES PKG OF 400 27¢

Scott. FAMILY NAPKINS 2 PKGS OF 60 25¢

Baby Food BECH NUT STRAINED 4 4 1/2 OZ JARS 41¢

Baby Food BECH NUT CHOPPED 7 7 OZ JARS 89¢

Dog Food LADDIE BOY CHICKEN 2 16 OZ CANS 43¢

Beef Stew LIBBY 2 20 OZ CAN 49¢

Libby CORNED BEEF HASH 16 OZ CAN 39¢

Corned Beef LIBBY 12 OZ CAN 53¢

Fab DETERGENT LGE PKG 33¢

Ad FOR AUTOMATIC WASHERS LGE PKG 39¢

Floriant FLORAL DEODORANT 5½ OZ CAN 79¢

Cleanser PINE DUTCH 2 14 OZ CANS 25¢

WISH-BONE ITALIAN DRESSING 8 OZ BTL 39¢ 16 OZ BTL 59¢

First National STORES

BONE-IN CHUCK ROAST 53¢

BONELESS - Lean and Tender CHUCK ROAST 69¢

BONE-IN - Tender and Flavorful CHUCK STEAK 63¢

SHOULDER - Well Trimmed Smoked Butts 59¢

Mildly Cured Sliced Bacon 39¢

Link Sausage 49¢

COUNTRY STYLE 2 Lb. PKG 98¢

Fresh Sliced Cod 39¢

ORDER YOUR THANKSGIVING TURKEY NOW!

So Much Depends On The Turkey - Make Sure It's First National Quality!

Substantial Savings on Thanksgiving Needs!

FINAST - Fancy Sweet Potatoes 2 18 OZ CANS 45¢

FINAST - Fancy Small Size Sweet Peas 2 7 OZ CANS 35¢

WHOLE ONIONS 2 1½ LB JARS 49¢

JUMBLE-PAC - Small or Large Stuffed Olives 10 OZ JAR 49¢

SMALL - Cleaned Fancy Shrimp 5 OZ CAN 43¢

FINAST - Fancy Meat Mince Meat 2 9 OZ PKGS 39¢

FINAST - For Light Flaky Crust Pie Crust 2 9 OZ PKGS 25¢

Reynold's Foil REG ROLL 28¢

Top Quality Fresh Produce!

FLORIDA - LARGE SIZE

Oranges 18 FOR 59¢

Grapefruit 4 FOR 33¢

Pears 2 LBS 29¢

Grapes 2 LBS 29¢

Apples 4 LB 43¢

Lettuce HEAD 19¢

Celery BUNCH 29¢

Broccoli BUNCH 33¢

Onions 3 LBS 33¢

Turnips YELLOW BUTABAGA 15¢

Squash SWEET - HAWYLAND 3 LBS 25¢

Potatoes BUTTERNUT 13¢

Figs PULLED CALIFORNIA 1½ LB PKG 53¢

Dates 6 OZ REG 29¢

Walnuts DIAMOND 4 OZ 49¢

Mixed Nuts FANCY 1½ LB PKG 39¢

Chestnuts IMPORTED 18 29¢

More Thanksgiving Values!

Instant Potatoes BORDEN'S 5½ OZ 33¢

Nut Shelf Mixed Nuts 14 OZ CAN 89¢

BC Breakfast Cocktail 4 OZ CAN 39¢

Mince Meat GRANDMOTHER'S 28 OZ JAR 49¢

Royal Puddings ALL FLAVORS 4 REG 35¢

Shredded Coconut DUNKER'S 7 OZ CULO 31¢

Nabisco Cookies ORO CREAM 1½ LB SANDWICH CULO 47¢

Dole's Fruit Cocktail 17 OZ CAN 29¢

Educator Cookies HOLIDAY ASSORTMENT 1½ LB PKG 45¢

Stuffing Mix STICKNEY & POOR 4 OZ CAN 17¢

Star-Kist Tuna WHITE MEAT 4½ OZ CAN 35¢

Codfish Cakes STARBUCK'S 10½ OZ CAN 21¢

Finast Cocktail Sauce 12 OZ BTL 29¢

Be Sure to Have Enough on Hand

STUFFING BREAD 2 1-LB LOAVES 33¢

BETTY ALDEN

LET US BAKE YOUR HOLIDAY PIES!

JOAN CAROL - Made from an old fashioned recipe Mince Pie EACH 59¢

JOAN CAROL - Made from juicy, free-ripened apples Apple Pie EACH 53¢

JOAN CAROL - Light or Dark Check Full of Fruit and Nuts FRUIT CAKE 1½ LB 1.29

WE RESERVE THE RIGHT TO LIMIT QUANTITIES.

FIRST NATIONAL STORES



BUGS BUNNY BY V. T. HAMLIN



PRISCILLA'S POP BY AL VERMEER



LONG SAM BY AL CAPP and BOB LUBBERS



JUDD SAXON BY KEN BALD and JERRY BRONFIELD



RUZZ SAWYER BY BOY CRANE



MORTY MEEH BY JOHNNY HART



MICKY FINN BY LANK LEONARD



MR. ABERNATHY BY RALSTON JONES and FRANK RIDGEWAY



THE STORY OF MARTHA WAYNE BY WILSON SCRUGGS

OUR BOARDING HOUSE with MAJOR HOOPLE



OUR BOARDING HOUSE with MAJOR HOOPLE BY DICK TURNER



CARNIVAL BY DICK TURNER



LITTLE SPORTS BY ROUSON



MORTY MEEH BY JOHNNY HART



MORTY MEEH BY JOHNNY HART



MORTY MEEH BY JOHNNY HART

Hebron Parish Holds Reception for New Rector

The Rev. Gordon W. Weeman was installed last night as rector of St. Peter's Episcopal Church in a brief ceremony presided over by Rt. Rev. John H. Esquivel, Bishops of Connecticut.

Going to Italy for Vacation

Mrs. Salvatore Leone, 69 Janet St., sailed Saturday from New York aboard the Greek Lines Sagra, "Olympia," for a four month's visit with relatives in Sicily, Italy, her home town.

Grange Notes

Manchester Grange No. 31 held its regular meeting last night at Orange Hall.

Grange Notes

Manchester Grange No. 31 held its regular meeting last night at Orange Hall.

Grange Notes

Manchester Grange No. 31 held its regular meeting last night at Orange Hall.

Grange Notes

Manchester Grange No. 31 held its regular meeting last night at Orange Hall.

Regional Christmas Fair Set for Dec. 12

The Christmas Fair will be held Dec. 12 from 3 to 10 p.m. in the R.H.A.M. High School gymnasium by the Parent Teacher Student Assn. A supper will be served in the school cafeteria in conjunction with the fair.

Autopsy Ordered

West Hartford, Nov. 19 (AP)—The unexpected death yesterday of a 36-year-old West Hartford woman left her 11-month-old son temporarily unattended in the back yard in freezing weather.

Grange Notes

Manchester Grange No. 31 held its regular meeting last night at Orange Hall.

Grange Notes

Manchester Grange No. 31 held its regular meeting last night at Orange Hall.

Grange Notes

Manchester Grange No. 31 held its regular meeting last night at Orange Hall.

Grange Notes

Manchester Grange No. 31 held its regular meeting last night at Orange Hall.

Sperry's Pond Ice Danger to Tots

Parents were warned today to keep children from playing near Sperry's Pond in Bolton where a thin sheet of ice is forming on the water.

Grange Notes

Manchester Grange No. 31 held its regular meeting last night at Orange Hall.

Grange Notes

Manchester Grange No. 31 held its regular meeting last night at Orange Hall.

Grange Notes

Manchester Grange No. 31 held its regular meeting last night at Orange Hall.

Grange Notes

Manchester Grange No. 31 held its regular meeting last night at Orange Hall.

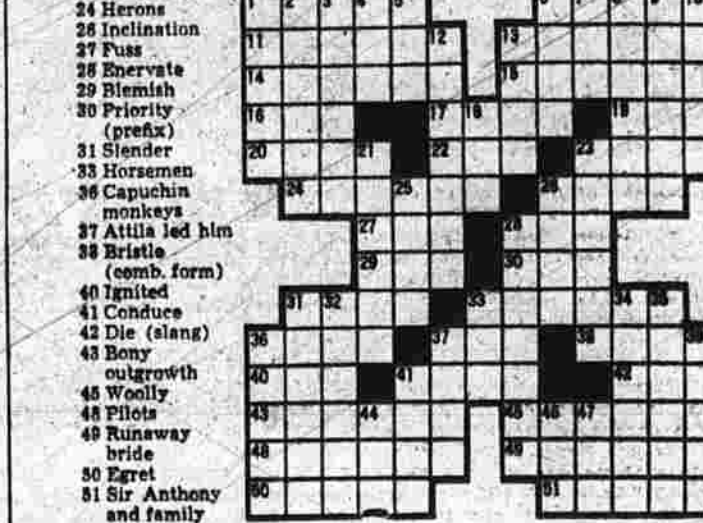
Grange Notes

Manchester Grange No. 31 held its regular meeting last night at Orange Hall.

DAILY CROSSWORD PUZZLE

Indians Answer to Previous Puzzle

- ACROSS: 1. Canadian flag, 2. Kind of tea, 3. Kind of tea, 4. Kind of tea, 5. Kind of tea, 6. Kind of tea, 7. Kind of tea, 8. Kind of tea, 9. Kind of tea, 10. Kind of tea, 11. Kind of tea, 12. Kind of tea, 13. Kind of tea, 14. Kind of tea, 15. Kind of tea, 16. Kind of tea, 17. Kind of tea, 18. Kind of tea, 19. Kind of tea, 20. Kind of tea, 21. Kind of tea, 22. Kind of tea, 23. Kind of tea, 24. Kind of tea, 25. Kind of tea, 26. Kind of tea, 27. Kind of tea, 28. Kind of tea, 29. Kind of tea, 30. Kind of tea, 31. Kind of tea, 32. Kind of tea, 33. Kind of tea, 34. Kind of tea, 35. Kind of tea, 36. Kind of tea, 37. Kind of tea, 38. Kind of tea, 39. Kind of tea, 40. Kind of tea, 41. Kind of tea, 42. Kind of tea, 43. Kind of tea, 44. Kind of tea, 45. Kind of tea, 46. Kind of tea, 47. Kind of tea, 48. Kind of tea, 49. Kind of tea, 50. Kind of tea, 51. Kind of tea, 52. Kind of tea, 53. Kind of tea, 54. Kind of tea, 55. Kind of tea, 56. Kind of tea, 57. Kind of tea, 58. Kind of tea, 59. Kind of tea, 60. Kind of tea, 61. Kind of tea, 62. Kind of tea, 63. Kind of tea, 64. Kind of tea, 65. Kind of tea, 66. Kind of tea, 67. Kind of tea, 68. Kind of tea, 69. Kind of tea, 70. Kind of tea, 71. Kind of tea, 72. Kind of tea, 73. Kind of tea, 74. Kind of tea, 75. Kind of tea, 76. Kind of tea, 77. Kind of tea, 78. Kind of tea, 79. Kind of tea, 80. Kind of tea, 81. Kind of tea, 82. Kind of tea, 83. Kind of tea, 84. Kind of tea, 85. Kind of tea, 86. Kind of tea, 87. Kind of tea, 88. Kind of tea, 89. Kind of tea, 90. Kind of tea, 91. Kind of tea, 92. Kind of tea, 93. Kind of tea, 94. Kind of tea, 95. Kind of tea, 96. Kind of tea, 97. Kind of tea, 98. Kind of tea, 99. Kind of tea, 100. Kind of tea.



SHORT RIBS



SHORT RIBS BY FRANK O'NEAL

LYNN POULTRY FARMS. Choice Fresh Connecticut Poultry... Direct From Farm To You! OPEN TUESDAY NOV. 24th TILL 9 P.M. Order Your Holiday Poultry Now!

THE hob-nob. MANCHESTER SHOPPING PARKADE. Try Our Delicatessen Department For Those Hard to Find Imported and Domestic Delicacies.

EVERYTHING FOR A FESTIVE THANKSGIVING. Popular. 974 Main St. Manchester. OPEN THURSDAY and FRIDAY Hill 9. WAYBEST OVEN-READY TURKEYS. U.S. GOVERNMENT GRADE "A". OVER 19 LBS. UNDER 19 LBS. lb. 43c lb. 45c.

TOPS IN HEARTY, THRIFTY EATING!

BURSACK'S SUPER MARKET. HFD, ROAD COR. MCKEE ST.—PHONE MI 9-6532. ALWAYS PLUNNY OF FREE PARKING. We Give Customers Profit-Sharing Stamps.

25 EXTRA WORLD STAMPS WITH PURCHASE OF DEERFOOT FRANKFURTS. MASSACHUSETTS PACKED CRANBERRY SAUCE. OCEAN SPRAY 2 TALL CANS 37c.

16 OZ. CANS SHURFIN Grapefruit Sections 2 cans 39c. 25-FT. REYNOLDS Aluminum Foil 29c. 1 LB. OF GOLD Oleomargarine 2 lbs. 37c. MASSACHUSETTS OCEAN SPRAY Cranberry Sauce 2 1/2-oz. cans 37c. LADY GRAHAM Fancy Mixed Nuts 45c. REFRIGERATOR JAR TANTEWELL Spanish Olives (REGULARLY 49c) 41c. REGULAR 36c. Flako Pie Crust 2 boxes 31c. REEBLER SALTINES 1 lb. box 29c. NABISCO RYE THINS 1 box 25c. EDUCATOR CRAX 1 box 25c.

QUALITY MEAT. WHOLE PORK LOINS Lb. 45c. BONELESS POT ROAST Lb. 79c. WAYBEST CHICKENS (TO BROIL OR FRY) LA 39c. RINDLESS SLAB BACON (By The Piece) LA 39c. Be sure of complete satisfaction. Order your Thanksgiving Turkey NOW! We will have Swift's Butterball and Fresh Native Turkeys.

MASSACHUSETTS PACKED CRANBERRY SAUCE. OCEAN SPRAY 2 TALL CANS 37c. Pumpkin or Squash One Pie 2 Cans 25c. Sweet Potatoes Kelly No. 3 Can 21c. Tomato Juice Popular 24 Oz. Can 2 For 49c. Green Beans Popular Tall Cans 2 For 27c. Cling Peaches Popular No. 3 1/2 Can 25c. Mince Meat None Back 9 Oz. 25c 16 Oz. 49c. Table Napkins Red Cross 20 Ct. 2 Pkg. 19c. Fresher By Far... Produce. MEINTOSH OR BALDWIN APPLES 4 lbs. 39c. BANANAS lb. 10c (LOOSE). CIDER jug 69c. GRAPEFRUIT 6 for 35c. SAVE MONEY and STAMPS at POPULAR...

Thanksgiving MEANS TURKEYS. DON'T build your meals around an inferior bird. All year work with "Fiesta" is spoiled if your turkey is second rate. You can be sure with us. TEMPTING FRUITS AND DRESSING DELICIOUS VEGETABLES. NATIVE GREEN CABBAGE Lb. 5c. YELLOW GLOBE OR PURPLE TOP TURNIPS 3 Lbs. 25c. FIGS, DATES, WALNUTS, CHESTNUTS... everything for your holiday feast.

Frozen Food. REPEAT OF LAST WEEK'S SELL-OUT! FARM HOUSE PIES APPLE BLUEBERRY 39c 49c. WE WILL HAVE 5-LB. BOXES OF CLEANED SHRIMP FOR THE HOLIDAYS.

Thanksgiving MEANS TURKEYS. DON'T build your meals around an inferior bird. All year work with "Fiesta" is spoiled if your turkey is second rate. You can be sure with us. TEMPTING FRUITS AND DRESSING DELICIOUS VEGETABLES. NATIVE GREEN CABBAGE Lb. 5c. YELLOW GLOBE OR PURPLE TOP TURNIPS 3 Lbs. 25c. FIGS, DATES, WALNUTS, CHESTNUTS... everything for your holiday feast.

Smart "year 'round" shoppers get...

LOW PRICES *plus*

Triple-S Blue Stamp Savings

MILD CURED—READY TO EAT

SMOKED HAMS

39¢

lb. FULL CUT SHANK HALF



GROUND BEEF

2 lbs. 89¢

SLICED BACON

lb. 39¢

GRAND UNION SUPERMARKETS

Join the Parade to **LOW PRICES at Grand Union**

Nancy Lynn
DEVIL'S FOOD SQUARE CAKE
Covered with Chocolate Butter Cream Icing
... 49¢

Cinnamon Raisin Buns 1/2 doz. 43¢
Crumb Cherry Pie 55¢
Coconut Layer Cake 79¢
Plain, Sugared Donuts 12 for 27¢

QUICK and EASY FROZEN FOODS

BIRD'S EYE
GREEN PEAS 10-oz. pkg. 49¢
CUT CORN 10-oz. pkg. 49¢
POTATOES INSTANT WHIPPED 10-oz. pkg. 49¢

KITCHEN GARDEN
Brussels Sprouts 2 10-oz. pkg. 49¢

DORANN Candied Yams 29¢
MORTON Pumpkin Pie 49¢
MORTON Mince Pie 55¢
KITCHEN GARDEN French Fries 3 for 49¢
TEDDY Haddock Fillet 53¢

SUNKIST FROZEN FRUIT PUNCHES
2 6-oz. cans 35¢
ALL VARIETIES

KODAK BROWNIE MOVIE CAMERA KIT
SAVE 30%
\$28.88
Includes: Brownie Movie Camera, 2.5 Brownie 2-Lamp Movie Light, 2 Reflector Flood Lamps, Instruction Book, Tilt Board in Cover.

Dessert Favorites
FRESH PAK
ICE CREAM
half gallon 59¢
SERVE WITH KITCHEN GARDEN
STRAWBERRIES FROZEN 2 10-oz. pkg. 39¢
OR GRAND UNION PEACHES SLICED OR HALVES 2 16-oz. cans 41¢
Bake a Thanksgiving Pie!
MY-T-FINE 7 MINIT PIE CRUST MIX 2 9-oz. pkg. 25¢
GRAND UNION Pumpkin 2 27-oz. cans 37¢ | NON-SUCH Mince Meat 9-oz. pkg. 27¢

Smart "holiday" shoppers save cash and

BLUE STAMPS

with Grand Union's Low Prices

ALL GRANBERIES Sold in Grand Union Stores have been tested by the Porter D. Small Research Laboratories and are CERTIFIED SAFE AND FREE FROM ANY IMPURITIES

CRANBERRY SAUCE 2 16-oz. CANS 33¢
Other Delicious Companions for Your Thanksgiving Turkey!
APPLBERRY APPLE RASPBERRY 2 16-oz. cans 39¢
REDDI-NAID JELLIED CHERRY SAUCE 2 16-oz. cans 49¢
APPLBERRY APPLE STRAWBERRY 2 16-oz. cans 39¢

DOLE or GRAND UNION
FRUIT COCKTAIL 30-oz. can 37¢
DEL MONTE
GREEN PEAS 2 17-oz. cans 31¢
LIBBY'S
TOMATO JUICE 46-oz. can 25¢

CIDER FRESHLY MADE gal. jug 69¢
GRAND UNION
SWEET POTATOES 2 18-oz. cans 49¢
FRENCH'S
INSTANT POTATOES 7-oz. pkg. 28¢
ROYAL PRINCE
GOLDEN YAMS 2 16-oz. cans 49¢
LUCKY LEAF
APPLESAUCE 2 25-oz. jars 49¢
VACUUM PACKED
NANCY LYNN COFFEE 1/2 lb. can 67¢
FOIL WRAPPED
TERRY THIN MINTS 10-oz. pkg. 39¢

for Stuffin'
STUFFING BREAD FRESHBAKE 1/2 loaf 17¢
SWIFT'S SAUSAGE BROOKFIELD BRAND 1/2 lb. bag 35¢
BELL'S SEASONING POULTRY 2 1-oz. pkg. 27¢
ARNOLD'S STUFFING ALL PURPOSE 8-oz. pkg. 29¢
FRESH OYSTERS STANDARD SIZE 1 1/2-pint 59¢

SWEET FLORIDA JUICE
ORANGES 5 lb. bag 39¢
ANJOU PEARS FULL OF FLAVOR 2 lbs. 29¢
SWEET POTATOES HOLIDAY FAVORITE 4 lbs. 25¢
WHITE ONIONS BOILING SIZE 3 lbs. 29¢
FRESH CITRUS FRUIT SALAD 1/2 doz. 59¢
CYPRESS GARDENS
LARGE SIZE DIAMOND WALNUTS 1/2 doz. 49¢

All the fixin's
FANCY SHRIMP MEDIUM SIZE 1/2 lb. 69¢
DATE and Nut Roll 29¢
CALIFORNIA Fresh Dates 25¢
IN THE SHELL Mixed Nuts 49¢
FRESHPAK Stuffed Olives 31¢
FRESHPAK Potato Chips 29¢
FRESHPAK Black Pepper 25¢
3 1/2 S MIDGET Sweet Onions 39¢
FRESHPAK Cherries 33¢
Penguin Beverages 2 29¢
B & G PICKLES Tiny Treats 37¢
SNOW'S Minc'd Clams 29¢
B & G FRESH Kosher Dills 39¢
FRESHPAK Pretzels 19¢
SCOTKINS Napkins 2 45¢
REYNOLDS' Foil Wrap 27¢
MCCORMICK'S Cinnamon Sugar 19¢
MCCORMICK'S Paprika 35¢
For a Festive Table TALLY-NO CANDLES
10-inch size 2 19¢
BOX OF 12 ONLY 99¢
15-inch size 2 29¢
BOX OF 12 ONLY 99¢
Your choice of popular colors!



Hundreds of ways to say The Triple-S

What a wonderful way to fill your Christmas Gift list without straining your budget!

Simply shop at Grand Union and other places where you see the TRIPLE-S Sign and get Blue Stamps with all your purchases. You know, it takes only 1200 stamps to fill a TRIPLE-S Saver Book (most other plans require 1500).

⌘ Toasters, Luggage, Neck-Tie Clips...Toys or Rugs or European Trips

FREE GIFTS
Get your NEW Catalog TODAY!
The Gift Plan of TRIPLE-S BLUE STAMPS has been studied and awarded this Seal of APPROVAL by PARENTS!

"Merry Christmas" without spending money

Blue Stamp Way

Visit your nearest TRIPLE-S REDEMPTION CENTER and see the hundreds of gifts on display. No matter what size gift you're looking for... from a pair of nylons to a Premier refrigerator... there's still time to get something "just right" for every member of your family. And they're all FREE with Blue Stamps—our way of saying "Thank You for Your Patronage".

They're all yours. Yes, they're all yours...The Triple-S Blue Stamp Way



FREE GIFTS

Superb Passer Van Brocklin Runs Only from Sheer Fright

Philadelphia — (NIA) — All football fans who have seen Van Brocklin in action when he was with the Los Angeles Rams...



Van Brocklin runs with the football during a game for the Los Angeles Rams.

Record Show Must Stop Boston Celtics

New York, Nov. 19 (AP) — All seven teams when they met Boston Celtics in the National Basketball Association...

McGraw's Idea

Discipline, the American contribution to bowling, first appeared in 1921...

INTER-CHURCH TEN PIN

Table with columns for Name, Points, and other statistics for inter-church ten pin bowling.

Road Race Entry List

Table listing names and affiliations for the road race entry list.

Syracuse Eleven Rates Top Grid Billing

Orange Leads Major Colleges In Statistics

Local Sport Chatter

By EARL YOST
JUNIOR LEAGUE basketball boys will have their first start...

Time Marches On: Old Amos to Run

Phoenix, Ariz., Nov. 19 (AP) — Zora Polley, stretched out on a bright red sofa...

Folley After Knockout But Accepts Decision

Gridders Work To Get Ready For Final Tilt

Philadelphians — (NIA) — All football fans who have seen Van Brocklin in action...

Record Show Must Stop Boston Celtics

McGraw's Idea

INTER-CHURCH TEN PIN

Road Race Entry List

Syracuse Eleven Rates Top Grid Billing

Local Sport Chatter

Time Marches On: Old Amos to Run

Folley After Knockout But Accepts Decision

Philadelphians — (NIA) — All football fans who have seen Van Brocklin in action...

Record Show Must Stop Boston Celtics

McGraw's Idea

INTER-CHURCH TEN PIN

Road Race Entry List

Syracuse Eleven Rates Top Grid Billing

Local Sport Chatter

Time Marches On: Old Amos to Run

Folley After Knockout But Accepts Decision

Philadelphians — (NIA) — All football fans who have seen Van Brocklin in action...

Record Show Must Stop Boston Celtics

McGraw's Idea

INTER-CHURCH TEN PIN

Road Race Entry List

Syracuse Eleven Rates Top Grid Billing

Local Sport Chatter

Time Marches On: Old Amos to Run

Folley After Knockout But Accepts Decision

Philadelphians — (NIA) — All football fans who have seen Van Brocklin in action...

Record Show Must Stop Boston Celtics

McGraw's Idea

INTER-CHURCH TEN PIN

Road Race Entry List

Syracuse Eleven Rates Top Grid Billing

Local Sport Chatter

Time Marches On: Old Amos to Run

Folley After Knockout But Accepts Decision

Philadelphians — (NIA) — All football fans who have seen Van Brocklin in action...

Record Show Must Stop Boston Celtics

McGraw's Idea

INTER-CHURCH TEN PIN

Road Race Entry List

Syracuse Eleven Rates Top Grid Billing

Local Sport Chatter

Time Marches On: Old Amos to Run

Folley After Knockout But Accepts Decision

Philadelphians — (NIA) — All football fans who have seen Van Brocklin in action...

Record Show Must Stop Boston Celtics

McGraw's Idea

INTER-CHURCH TEN PIN

Road Race Entry List

Syracuse Eleven Rates Top Grid Billing

Local Sport Chatter

Time Marches On: Old Amos to Run

Folley After Knockout But Accepts Decision

